

## Trademarks

Autel<sup>®</sup>, MaxiSys<sup>®</sup>, MaxiDAS<sup>®</sup>, MaxiScan<sup>®</sup>, MaxiCheck<sup>®</sup>, MaxiRecorder<sup>®</sup>, and MaxiCheck<sup>®</sup> are trademarks of Autel Intelligent Technology Corp., Ltd., registered in China, the United States and other countries. All other marks are trademarks or registered trademarks of their respective holders.

## Copyright Information

No part of this manual may be reproduced, stored in a retrieval system or transmitted, in any form or by any means, electronic, mechanical, photocopying, recording, or otherwise without the prior written permission of Autel.

## Disclaimer of Warranties and Limitation of Liabilities

All information, specifications and illustrations in this manual are based on the latest information available at the time of printing.

Autel reserves the right to make changes at any time without notice. While information of this manual has been carefully checked for accuracy, no guarantee is given for the completeness and correctness of the contents, including but not limited to the product specifications, functions, and illustrations.

Autel will not be liable for any direct, special, incidental, indirect damages or any economic consequential damages (including the loss of profits).

---

### IMPORTANT

Before operating or maintaining this unit, please read this manual carefully, paying extra attention to the safety warnings and precautions.

---

### For Services and Support



[pro.autel.com](http://pro.autel.com)

[www.autel.com](http://www.autel.com)



1-855-288-3587/1-855-AUTELUS (North America)

0086-755-86147779 (China)



[support@autel.com](mailto:support@autel.com)

For technical assistance in all other markets, please contact your local selling agent.

# Safety Information

---

For your own safety and the safety of others, and to prevent damage to the device and vehicles upon which it is used, it is important that the safety instructions presented throughout this manual be read and understood by all persons operating or coming into contact with the device.

There are various procedures, techniques, tools, and parts for servicing vehicles, as well as in the skill of the person doing the work. Because of the vast number of test applications and variations in the products that can be tested with this equipment, we cannot possibly anticipate or provide advice or safety messages to cover every circumstance. It is the automotive technician's responsibility to be knowledgeable of the system being tested. It is crucial to use proper service methods and test procedures. It is essential to perform tests in an appropriate and acceptable manner that does not endanger your safety, the safety of others in the work area, the device being used, or the vehicle being tested.

Before using the device, always refer to and follow the safety messages and applicable test procedures provided by the manufacturer of the vehicle or equipment being tested. Use the device only as described in this manual. Read, understand, and follow all safety messages and instructions in this manual.

## Safety Messages

---

Safety messages are provided to help prevent personal injury and equipment damage. All safety messages are introduced by a signal word indicating the hazard level.

---

### **DANGER**

Indicates an imminently hazardous situation which, if not avoided, will result in death or serious injury to the operator or to bystanders.

---

---

### **WARNING**

Indicates a potentially hazardous situation which, if not avoided, could result in death or serious injury to the operator or to bystanders.

---

# Safety Instructions

---

The safety messages herein cover situations Autel is aware of. Autel cannot know, evaluate or advise you as to all of the possible hazards. You must be certain that any condition or service procedure encountered does not jeopardize your personal safety.

---

## DANGER

When an engine is operating, keep the service area **WELL VENTILATED** or attach a building exhaust removal system to the engine exhaust system. Engines produce carbon monoxide, an odorless, poisonous gas that causes slower reaction time and can lead to serious personal injury or loss of life.

---

## SAFETY WARNINGS

- Always perform automotive testing in a safe environment.
- Wear safety eye protection that meets ANSI standards.
- Keep clothing, hair, hands, tools, test equipment, etc. away from all moving or hot engine parts.
- Operate the vehicle in a well-ventilated work area, for exhaust gases are poisonous.
- Put the transmission in **PARK** (for automatic transmission) or **NEUTRAL** (for manual transmission) and make sure the parking brake is engaged.
- Put blocks in front of the drive wheels and never leave the vehicle unattended while testing.
- Be extra cautious when working around the ignition coil, distributor cap, ignition wires and spark plugs. These components create hazardous voltages when the engine is running.
- Keep a fire extinguisher suitable for gasoline, chemical, and electrical fires nearby.
- Do not connect or disconnect any test equipment while the ignition is on or the engine is running.
- Keep the test equipment dry, clean, free from oil, water or grease. Use a mild detergent on a clean cloth to clean the outside of the equipment as necessary.
- Do not drive the vehicle and operate the test equipment at the same time. Any distraction may cause an accident.
- Refer to the service manual for the vehicle being serviced and adhere to all diagnostic procedures and precautions. Failure to do so may result in

personal injury or damage to the test equipment.

- To avoid damaging the test equipment or generating false data, make sure the vehicle battery is fully charged and the connection to the vehicle DLC is clean and secure.
- Do not place the test equipment on the distributor of the vehicle. Strong electro-magnetic interference can damage the equipment.

# CONTENTS

1 USING THIS MANUAL .....	1
CONVENTIONS .....	1
2 USING THE SCAN TOOL.....	3
TOOL DESCRIPTION.....	3
SPECIFICATIONS .....	4
ACCESSORIES INCLUDED .....	5
KEYPAD .....	5
POWER .....	5
VEHICLE COVERAGE.....	6
PRODUCT TROUBLESHOOTING.....	6
3 OBD II DIAGNOSTICS .....	8
READ CODES.....	10
ERASE CODES .....	12
LIVE DATA .....	13
VIEW FREEZE FRAME DATA.....	21
RETRIEVE I/M READINESS STATUS .....	22
O2 MONITOR TEST .....	24
ON-BOARD MONITOR TEST .....	26
COMPONENT TEST .....	28
VIEW VEHICLE INFORMATION.....	29
MODULES PRESENT .....	31
CODE BREAKER .....	31
4 ABS.....	33
READ CODES.....	33
ERASE CODES .....	34

5 SRS .....	36
READ CODES.....	36
ERASE CODES.....	36
6 DTC LOOKUP.....	38
7 PLAYBACK DATA .....	40
REVIEW DATA.....	40
DELETE DATA .....	41
PRINT DATA .....	41
8 SYSTEM SETUP .....	44
LANGUAGE .....	44
UNIT OF MEASURE .....	45
KEY BEEP SET.....	46
ABOUT .....	46
TOOL SELF-TEST.....	47
UPDATE MODE .....	48
VEHICLE INFO SHOW SET .....	51
9 COMPLIANCE INFORMATION .....	52
10 WARRANTY AND SERVICE .....	54
LIMITED ONE YEAR WARRANTY .....	54
SERVICE PROCEDURES .....	54

# 1 Using This Manual

This manual contains device usage instructions.

Some illustrations shown in this manual may contain modules and optional equipment that are not included in your system. Contact your sales representative for availability of other modules and optional tools or accessories.

## Conventions

---

The following conventions are used.

### Bold Text

Bold text is used to highlight selectable items such as buttons and menu options.

Example:

- Tap **OK**.

### Notes and Important Messages

#### *Notes*

A **NOTE** provides helpful information such as additional explanations, tips, and comments.

Example:

---

#### **NOTE**

New batteries reach full capacity after approximately 3 to 5 charging and discharging cycles.

---

#### *Important*

**IMPORTANT** indicates a situation which, if not avoided, may result in damage to the test equipment or vehicle.

Example:

---

**!** **IMPORTANT**

Keep the cable away from heat, oil, sharp edges and moving parts. Replace damaged cables immediately.

---

## **Hyperlink**

Hyperlinks, or links, that take you to other related articles, procedures, and illustrations are available in electronic documents. Blue italic text indicates a selectable hyperlink and blue underlined text indicates a website link or an email address link.

## **Illustrations**

Illustrations used in this manual are samples, the actual testing screen may vary by test vehicle. Observe the menu titles and on-screen instructions to make correct option selection.



# 2 Using the Scan Tool

## Tool Description

---

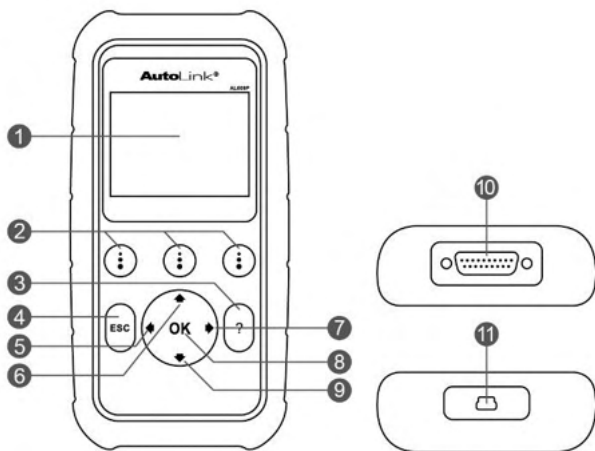


Figure 2-1 Scan Tool View

- 1) **LCD DISPLAY** –displays menus and test results.
- 2) **FUNCTION BUTTONS** – corresponds with “buttons” on screen for executing commands.
- 3) **HELP BUTTON** – provides help information and Code Breaker function.
- 4) **ESC BUTTON** – cancels a selection (or an action) from a menu or returns to the previous screen.
- 5) **LEFT SCROLL BUTTON** – when look up DTC definitions, moves to previous character and views additional information on previous screens if DTC definition covers more than one screen; views previous screen or previous frames of recorded data. It is also used to view previous trouble code when viewing DTCs.
- 6) **UP SCROLL BUTTON** – moves up through menu and submenu items in menu mode. When more than one screen of data is retrieved,

moves up through the current screen to the previous screens for additional data. When looking up DTC, it is used to change value of selected character.

- 7) **▶ RIGHT SCROLL BUTTON** – When look up DTC definitions, moves to next character and view additional information on next screens if DTC definition covers more than one screen; views next screen or next frames of recorded data. It is also used to view next trouble code when viewing DTCs.
- 8) **OK BUTTON** – confirms a selection (or action) from a menu.
- 9) **▼ DOWN SCROLL BUTTON** – moves down through menu and submenu items in menu mode. When more than one screen of data is retrieved, moves down through the current screen to next screens for additional data. When looking up DTC, it is used to change value of selected character.
- 10) **OBD II CONNECTOR** – connects the scan tool to the vehicle's Data Link Connector (DLC).
- 11) **USB CONNECTOR** – connects the scan tool to the PC for printing and upgrading.

## Specifications

---

**Table 2-1 Specifications**

Item	Description
Display	2.8-inch LCD (320 x 240 dpi)
Connectivity	USB mini 2.0 OBD II DB15
Operating Temp.	-10°C to 60°C (14°F to 140°F)
Storage Temp.	-20°C to 70°C (-4°F to 158°F)
External Power	8.0 to 18.0 V power provided via vehicle battery
Dimensions (LxWxH)	182.8 mm (7.2") x 90.9 mm (3.6") x 33.2 mm (1.3")
Net Weight	237.9 g (0.524 lb.)

## Accessories Included

---

- 1) **OBDII Cable** – provides power to tool and communicates between tool and vehicle.
- 2) **USB Cable** – used to upgrade the scan tool and to print retrieved data.
- 3) **Quick Guide** – instructions on device connection and tool registration and update.

## Keypad

---

No solvents such as alcohol are allowed to clean the keypad or display. Use a mild nonabrasive detergent and a soft cotton cloth. Do not soak the keypad as it is not waterproof.

## Power

---

The scan tool is powered via the vehicle Data Link Connector (DLC). Follow the steps below to turn on the scan tool:

- 1) Connect the OBD II Cable to the scan tool.
- 2) Find DLC on the vehicle.
  - A plastic DLC cover may be found for some vehicles and you need to remove it before plugging the OBDII cable.
- 3) Plug OBD II cable to the vehicle's DLC.
- 4) The scan tool will power up and the **Main Screen** will appear.



**Figure 2-2 Sample Main Screen**

# Vehicle Coverage

---

The AutoLink® AL609P OBDII Scanner is specially designed to work with all OBD II compliant vehicles, including those equipped with next-generation protocol -- Control Area Network (CAN). It is required by EPA that all 1996 and newer vehicles (cars and light trucks) sold in the United States must be OBD II compliant and this includes all Domestic, Asian and European vehicles.

A small number of 1994 and 1995 model year gasoline vehicles are OBD II compliant. To verify if a 1994 or 1995 vehicle is OBD II compliant, check the Vehicle Emissions Control Information (VECI) Label which is located under the hood or by the radiator of most vehicles. If the vehicle is OBD II compliant, the label will designate "OBD II Certified". Additionally, Government regulations mandate that all OBD II compliant vehicles must have a "common" sixteen-pin Data Link Connector (DLC).

For your vehicle to be OBD II compliant it must have a 16-pin DLC (Data Link Connector) under the dash and the Vehicle Emission Control Information Label must state that the vehicle is OBD II compliant.

In addition to OBD II diagnosis, the AL609P scan tool also reads and erases codes for ABS and SRS, dealing with more than 50 US, Asian and European vehicles, including Acura, Audi, Bentley, Benz, BMW, Bugatti, Chrysler, Ford, EU Ford, GM, Honda, Hyundai, Infiniti, Isuzu, Jaguar, Kia, Land Rover, Lexus, Maybach, Mazda, Mini, Mitsubishi, Nissan, Opel, Porsche, Saab, Scion, Seat, Skoda, Smart, Sprinter, Suzuki, Toyota, Vauxhall, Volvo, Volkswagen, Renault, Peugeot, Lancia, Fiat, Dacia, Citroen, Alfa, Abarth.

More vehicle supports will come out with new updates released.

# Product Troubleshooting

---

This part describes problems that you may encounter while using the scan tool.

## Vehicle Linking Error

A communication error occurs if the scan tool fails to communicate with the vehicle's ECU (Engine Control Unit). You need to do the following to check up:

- ✓ Verify that the ignition is ON.
- ✓ Check if the scan tool's OBD II connector is securely connected to the vehicle's DLC.
- ✓ Verify that the vehicle is OBDII compliant.
- ✓ Turn the ignition off and wait for about 10 seconds. Turn the ignition back to on and continue the testing.
- ✓ Verify the control module is not defective.

## Operating Error

If the scan tool freezes, then an exception occurs or the vehicle's ECU (Engine Control Unit) is too slow to respond to requests. You need to do the following to reset the tool:

- ✓ Reset the scan tool.
- ✓ Turn the ignition off and wait for about 10 seconds. Turn the ignition back to on and continue the testing.

## Scan tool doesn't power up

If the scan tool won't power up or operates incorrectly in any other way, you need to do the following to check up:

- ✓ Check if the scan tool's OBD II connector is securely connected to the vehicle's DLC;
- ✓ Check if the DLC pins are bent or broken. Clean the DLC pins if necessary.
- ✓ Check vehicle battery to make sure it is still good with at least 8.0 volts.

---

### NOTE

Avoid electrostatic interference during operation. If a failure occurs due to electrostatic interference, please try to operate again.

---

# 3 OBD II Diagnostics

When more than one vehicle control module is detected by the scan tool, you will be prompted to select the module where the data may be retrieved. The most often to be selected are the Power train Control Module [PCM] and Transmission Control Module [TCM].

**CAUTION:** *Don't connect or disconnect any test equipment with ignition on or engine running.*

- 1) Turn the ignition off.
- 2) Locate the vehicle's 16-pin Data Link Connector (DLC).
- 3) Plug the scan tool cable connector into the vehicle's DLC.
- 4) Turn the ignition on. Engine can be off or running.
- 5) Turn on the scan tool. Use the **UP/DOWN** scroll button to select **OBDII/EOBD** from the **Main Screen**.
- 6) Press the **OK** button to wait for the Menu to appear. With the embedded AutoVIN technology in the tool, a sequence of messages displaying the OBDII protocols will be observed on the display until the test vehicle's protocol is detected. The test vehicle information will display as below once it is done. Press **OK** to continue.

Vehicle Info	
Manufacturer:	VW
Year:	1994
VIN:	1V1JC5444R7252367

**Figure 3-1 Sample Vehicle Info Screen**

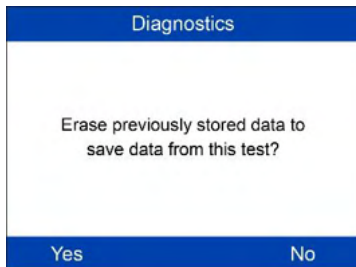
- *If the scan tool fails to communicate with the vehicle's ECU (Engine Control Unit) more than three times, a "LINKING ERROR!" message shows up on the display.*
- ✓ Verify that the ignition is ON;
- ✓ Check if the scan tool's OBD II connector is securely connected to the vehicle's DLC;

- ✓ Verify that the vehicle is OBD II compliant;
  - ✓ Turn the ignition off and wait for about 10 seconds. Turn the ignition back to on and repeat the procedure from step 5.
  - *If the “LINKING ERROR” message does not go away, then there might be problems for the scan tool to communicate with the vehicle. Contact your local distributor or the manufacturer’s customer service department for assistance.*
- 7) View a summary of system status (MIL status, DTC counts, Monitor status) on screen. Wait a few seconds or press any key to continue.

System Status	
MIL Status	OFF
Codes Foud	0
Monitors N/A	2
Monitors OK	3
Monitors INC	5

**Figure 3-2 Sample System Status Screen**

- If more than one module is detected, you will be prompted to select a module before testing.
  - Use the **UP/DOWN** scroll button to select a module and press the **OK** button.
- 8) Then you will be prompted to erase previously stored data.
- *Review previously stored data thoroughly before erasing.*



**Figure 3-3 Sample Erase Previous Data Screen**

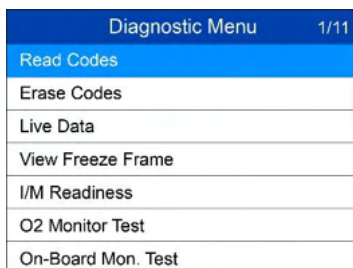
- *If no data is stored in the scan tool, the above prompt will not show up.*

- 9) If you wish to erase the data, press the **OK** button; if you do not want to erase the data, press **ESC** to exit or use **LEFT/RIGHT** button to select **NO** and press **OK** for **Diagnostic Menu** to come up.

## Read Codes

---

- ◆ *Read Codes can be done with the key on engine off (KOEO) or with the key on engine running (KOER).*
  - ◆ *Stored Codes are also known as “hard codes”, which are fault codes, or trouble codes that have been stored in the vehicle computer memory because the faults have reoccurred for more than a specified amount of key-cycles. These codes will cause the control module to illuminate the malfunction indicator light (MIL) when emission-related fault occurs.*
  - ◆ *Pending Codes are also referred to as “maturing codes” or “continuous monitor codes”. They indicate problems that the control module has detected during the current or last driving cycle but are not considered serious yet. Pending Codes will not turn on the malfunction indicator light (MIL). If the fault does not occur within a certain number of warm-up cycles, the code clears from memory.*
  - ◆ *Permanent Codes are DTCs that are “confirmed” and are retained in the non-volatile memory of the computer until the appropriate monitor for each DTC has determined that the malfunction is no longer present and is not commanding the MIL on. Permanent DTC shall be stored in non-volatile memory and may not be erased by any diagnostic services or by disconnecting power to ECU.*
- 1) Use **UP/DOWN** scroll button to select **Read Codes** from **Diagnostic Menu** and press **OK** button.

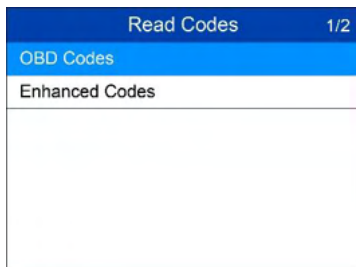


Diagnostic Menu	1/11
Read Codes	
Erase Codes	
Live Data	
View Freeze Frame	
I/M Readiness	
O2 Monitor Test	
On-Board Mon. Test	

**Figure 3-4 Sample Diagnostic Menu**

- 2) Use the **UP/DOWN** scroll button to select **OBDII Codes** or **Enhanced Codes** from the **Read Codes** menu and press the **OK** button.





**Figure 3-5 Sample Read Codes Screen**

- The **OBD Codes** reads pending codes, stored codes, and permanent codes. The **Enhanced Codes** reads DTCs from engine and transmission systems of GM, Chrysler, and Ford vehicles.
- If there is not any Diagnostic Trouble Code, the display indicates **“No (pending) codes are stored in the module!”** Wait a few seconds or press any key to return to previous screen.

**NOTE**

Permanent Codes function is available for merely vehicles supporting the CAN protocols.

- 3) View DTCs and their definitions on screen.



**Figure 3-6 Sample DTC Screen**

- 4) If more than one DTC is found, use the **LEFT/RIGHT** scroll button to check all the codes.
  - If retrieved DTCs contain any manufacturer specific or enhanced codes, the AutoVIN technology adopted by this tool will automatically display the definition of the code.

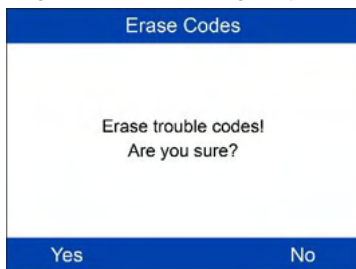
## Erase Codes

---

### NOTE

1. Erasing the Diagnostic Trouble Codes may allow the scan tool to delete not only the codes from the vehicle's on-board computer, but also "Freeze Frame" data and manufacturer specific enhanced data. Further, the I/M Readiness Monitor Status for all vehicle monitors is reset to Not Ready or Not Complete status. Do not erase the codes before the system has been checked completely by a technician.
2. Erasing codes does not mean that trouble codes in ECU have been eliminated completely. As long as there is fault with the vehicle, the trouble codes keeps on presenting.
3. This function is performed with key on engine off (KOEO). Do not start the engine.

- 1) Use the **UP/DOWN** scroll buttons to select **Erase Codes** from **Diagnostics Menu** and press the **OK** button.
- 2) A warning message comes up asking for your confirmation.



**Figure 3-7 Sample Erase Codes Screen**

- If you do not want to proceed with erasing codes, press **ESC** button or use **LEFT/RIGHT** scroll button to select **NO** to exit. A message of "**Command Cancelled!**" shows up. Wait a few seconds or press any key to return to **Diagnostic Menu**.
- 3) Press the **OK** button to confirm.
    - If the codes are cleared successfully, an "**Erase Done!**" confirmation message shows on the display.
    - If the codes are not cleared, then an "**Erase Failure. Turn Key on with Engine off!**" message appears.
  - 4) Press any button to return to **Diagnostic Menu**.

# Live Data

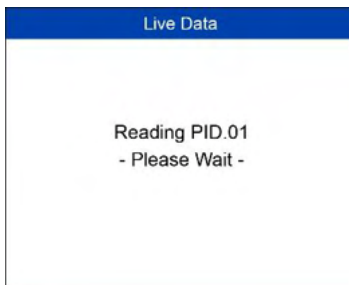
---

In this function, you can not only read the live data but also record data for later review.

## View Data

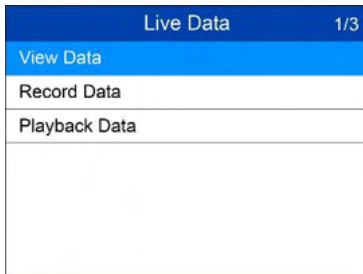
The View Data function allows viewing of live or real time PID data of vehicle's computer module(s).

- 1) To view live data, use the **UP/DOWN** scroll button to select **Live Data** from **Diagnostic Menu** and press the **OK** button.
- 2) Wait a few seconds while the scan tool validates the PID MAP.



**Figure 3-8 Sample Live Data Screen 1**

- 3) Use the **UP/DOWN** scroll button to select **View Data** from **Live Data** menu and press the **OK** button.



**Figure 3-9 Sample Live Data Screen 2**

### *View Complete Data Set*

- 1) To view complete set of data, use **UP/DOWN** scroll button to select **Complete Data Set** from **View Data** menu and press the **OK** button.

View Data	1/3
Complete Data Set	
Custom Data Set	
Unit of Measure	

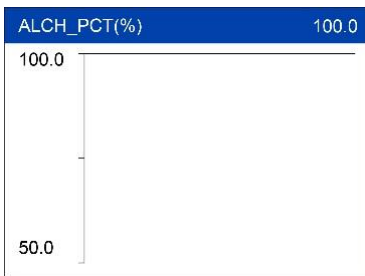
**Figure 3-10 Sample View Data Menu**

- 2) View live PIDs on the screen. Use the **UP/DOWN** scroll button for more PIDs if additional information is available on more than one page.

View Data	1/147
DTC_CNT	2
FUEL_TYP	--
ALCH_PCT(%)	100
EVAP_VPA(kPa)	327.675
EVAP_VP(Pa)	-1
STSO2FT1(%)	99.2
STSO2FT3(%)	99.2

**Figure 3-11 Sample Complete Data Screen**

- The number “x” to the right of the screen indicates sequence of the highlighted item.
- To view full name of the highlighted PID, press the “?” button.
- If the **G** icon appears when a PID is highlighted, graphic information is available. Press **OK** to view graph.



**Figure 3-12 Sample Data Graph Screen**

- 3) Press the ESC button to return to previous menu.

### View Custom Data Set

- 1) To view customized PID data, use the **UP/DOWN** scroll button to select **Custom Data Set** from **View Data** menu and press the **OK** button.
- 2) Observe on-screen instructions.



**Figure 3-13 Sample Custom Data Set Screen 1**

- 3) Use the **RIGHT** button to deselect/select data parameters, and use the **UP/DOWN** scroll button to move up and down. Selected parameters are marked with solid squares.

Custom Data Set		3/147
<input checked="" type="checkbox"/>	DTC_CNT	#01
<input type="checkbox"/>	FUEL_TYP	
<input checked="" type="checkbox"/>	ALCH_PCT	#02
<input type="checkbox"/>	EVAP_VPA	
<input type="checkbox"/>	EVAP_VP	
<input type="checkbox"/>	STSO2FT1	
<input type="checkbox"/>	STSO2FT3	

**Figure 3-14 Sample Custom Data Set Screen 2**

- The number “x” to the upper right corner of the screen indicates sequence of highlighted item; and “#x” are the order that the parameters are selected and will be displayed.
  - If you want to deselect all marked items or select all items, press the **LEFT** button. A message comes up to ask for your confirmation.
  - If you decide to deselect these items, press **OK**; if you decide not to, press **ESC** or use the **LEFT/RIGHT** scroll button to select **NO** to continue PID selections.
- 4) Press the **OK** button to view selected PIDs on screen.

Live Data		1/2
DTC_CNT		2
ALCH_PCT(%)		100.0

**Figure 3-15 Sample Custom Data Set Screen 3**

- 5) Use the **ESC** button to return to previous menu.

## Record Data

The Record Data function allows recording vehicle modules' Parameter Identification (PID) data to help diagnose intermittent vehicle problems. A recording includes 5 frames of live data before trigger event and several frames after trigger event.

There are two trigger modes used to record data:

- Manual Trigger** – allows user to press the **OK** button to start recording.
- DTC Trigger** – automatically records PID data when a fault that causes a DTC to set is detected by vehicle.

---

### NOTE

DO NOT try to drive and operate the scan tool at the same time! Always have another person operate the scan tool while driving.

---

To record live data, use the **UP/DOWN** scroll button to select **Record Data** from **Live Data** menu and press the **OK** button.

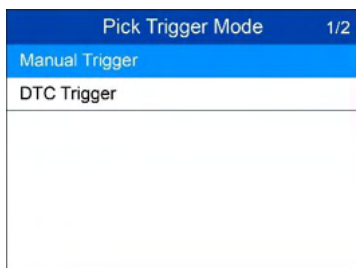
### *Record Complete Data Set*

- 1) To record complete set of live data, use the **UP/DOWN** scroll button to select **Complete Data Set** from **Record Data** menu and press the **OK** button.



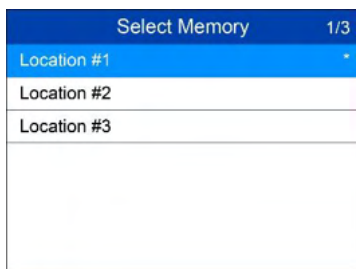
**Figure 3-16 Sample Record Data Screen**

- 2) Use the **UP/DOWN** scroll button to select a trigger mode and press the **OK** button.



**Figure 3-17 Sample Pick Trigger Mode Screen**

- If data from previously tested vehicle is not erased, data from current test will be stored in a temporary cache.
- 3) Use the **UP/DOWN** scroll button to select a memory location and press the **OK** button.



**Figure 3-18 Sample Select Memory Screen 1**

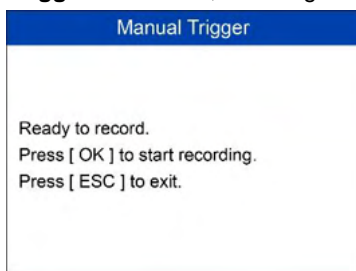
- The asterisk (\*) icon on the screen indicates that there is a previous recording in the memory location.
- If you select a location marked with an asterisk (\*) icon, a message prompting to overwrite old recording displays.



**Figure 3-19 Sample Select Memory Screen**

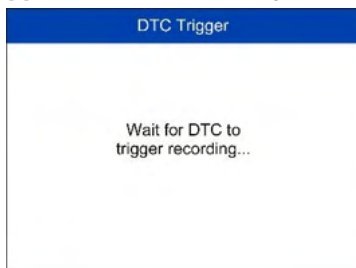
- If you wish to proceed with overwriting the old recording, press the **OK** button; if you do not wish to overwrite it, use the **LEFT/RIGHT** button to select **NO** or press the **ESC** button to pick another memory location.
- 4) Observe on-screen instructions.

- If **Manual Trigger** is selected, following screen shows:



**Figure 3-20 Sample Manual Trigger Screen**

- If **DTC Trigger** is selected, following screen shows:



**Figure 3-21 Sample DTC Trigger Screen**

- 5) Wait for DTC to trigger recording or press **OK** to start recording.

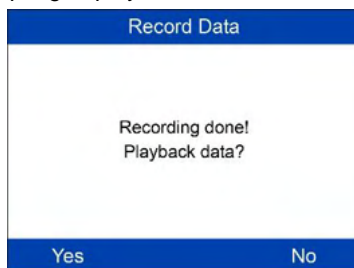


- ◆ Drive till a DTC is detected when DTC Trigger is selected. If no DTCs are detected, press ESC to exit recording.

Recording... 1/5		1/147
DTC_CNT		2
FUEL_TYP		--
ALCH_PCT(%)		100
EVAP_VPA(kPa)		327.675
EVAP_VP(Pa)		-1
STSO2FT1(%)		99.2
STSO2FT3(%)		99.2

**Figure 3-22 Sample Recording Data Screen**

- The number “x/x...” to the upper right corner of the screen indicates the maximum frames that can be recorded and the number of recorded frames.
- 6) The scan tool keeps recording PID data until user presses the **ESC** button, selected memory location is full, or it completes recording. A message prompting to playback data shows on the screen.



**Figure 3-23 Sample Recording Done Screen**

- If you wish to playback recorded data, press the **OK** button; if you do not wish to playback, press the **ESC** button, or use **LEFT/RIGHT** button to select **NO** and press the **OK** button to return to **Record Data** menu.

### *Record Custom Data Set*

- 1) To record customized data, use the **UP/DOWN** scroll button to select **Custom Data Set** from **Record Data** menu and press the **OK** button.
- 2) Observe on-screen instructions. Press the **OK** button to continue; press the **ESC** button, or use **LEFT/RIGHT** button to select **NO** and press the **OK** button to return to **Record Data** menu.

- 3) Use the **RIGHT** button select/deselect data parameters. Selected parameters are marked with solid squares. Press the **OK** button to confirm.
  - If you wish to deselect all marked items, press **LEFT** button.
  - A message comes up to ask for your confirmation.
  - If you decide to deselect these items, press **OK**; if you decide not to, press the **ESC** button, or use the **UP/DOWN** button to select **NO** and press **OK** to continue PID selections.
- 4) Use the **UP/DOWN** scroll button to select a trigger mode and press the **OK** button.
  - If data from previously tested vehicle is not erased, data from current test will be stored in temporary cache.
- 5) Use the **UP/DOWN** scroll button to select a memory location and press the **OK** button.
- 6) Observe on-screen instructions to select DTC trigger mode.
- 7) Wait for DTC to trigger recording or press OK to start recording.
- 8) The scan tool keep recording PID data until user presses ESC button, the selected memory location is full, or it completes recording. A message prompting to playback data shows on the screen.
  - If you wish to playback recorded data, press the **OK** button; if you do not wish to playback, press the **ESC** button, or use the **LEFT/RIGHT** button to select **NO** and press the **OK** button to return to **Record Data** menu.

## Playback Data

The Playback Data function allows viewing of previously stored PID data.

- 1) To playback recorded data, use the **UP/DOWN** scroll button to select **Playback Data** from **Live Data** menu and press the **OK** button.
  - You are also allowed to playback recorded data immediately after recording.
- 2) Use the **UP/DOWN** button to select the memory location marked with an asterisk (\*) icon.

Select Memory	1/3
Location #1	▼
Location #2	
Location #3	

**Figure 3-24 Sample Select Memory Screen 2**

- If there is no recording in selected location, a message “**Not Supported or Stored No Data**” displays on the screen.
- 3) Use the **UP/DOWN** button to view recorded PIDs of each frame.

1 of 1 frame	3/147
DTC_CNT	2
FUEL_TYP	--
ALCH_PCT(%)	100
EVAP_VPA(kPa)	327.675
EVAP_VP(Pa)	-1
STSO2FT1(%)	99.2
STSO2FT3(%)	99.2

**Figure 3-25 Sample Playback Data Screen**

- 4) Use the **LEFT/RIGHT** button to view PIDs of next or previous frames.

## View Freeze Frame Data

---

**Freeze Frame Data** allows the technician to view the vehicle’s operating parameters at the moment a DTC (Diagnostic Trouble Code) is detected. For example, the parameters may include engine speed (RPM), engine coolant temperature (ECT), or vehicle speed sensor (VSS) etc. This information will aid the technician by allowing the parameters to be duplicated for diagnostic and repair purposes.

- 1) To view freeze frame data, use the **UP/DOWN** scroll button to select **View Freeze Frame** from **Diagnostic Menu** and press the **OK** button.
- 2) Wait a few seconds while the scan tool validates the PID MAP.
- 3) If retrieved information covers more than one screen, use the **DOWN** scroll button, as necessary, until all the data have been shown up.

View Freeze Frame		1/76
DTC_CNT		127
DTCFRZF		U3FFF
FUELSYS1		OL
FUELSYS2		OL
LOAD_PCT(%)		100.0
ECT(°C)		-39
SHRTFT1(%)		-99.2

**Figure 3-26 Sample View Freeze Frame Screen**

- If there is no freeze frame data available, an advisory message “**No freeze frame data stored!**” shows on the display.
- 4) If you want to view full name of a PID, use the **UP/DOWN** scroll button to select the PID, and press the HELP button.
  - 5) Press **ESC** button to return to previous screen.

## Retrieve I/M Readiness Status

---

I/M Readiness function is used to check the operations of the Emission System on OBD II compliant vehicles. It is an excellent function to use prior to having a vehicle inspected for compliance to a state emissions program.

### NOTE

By clearing trouble codes you also clear the readiness status for the individual emission system readiness tests. In order to reset these monitors, the vehicle must be driven through a complete drive cycle with no trouble codes in memory. Times for reset vary depending on vehicle.

---

Some latest vehicle models may support two types of **I/M Readiness** tests:

- A. **Since DTCs Cleared** – indicates status of the monitors since the DTCs are erased.
- B. **This Drive Cycle** – indicates status of monitors since the beginning of the current drive cycle.

An I/M Readiness Status result of “NO” does not necessarily indicate that the vehicle being tested will fail the state I/M inspection. For some states, one or more such monitors may be allowed to be “Not Ready” to pass the emissions inspection.

There are two ways to retrieve I/M readiness status.

## Retrieve I/M Readiness status in typical way

- 1) Use the **UP/DOWN** scroll button to select **I/M Readiness** from **Diagnostic Menu** and press **OK** button.
- 2) Wait a few seconds while the scan tool validates the PID MAP.
- 3) If the vehicle supports both types of tests, then both types will be shown on the screen for selection.



**Figure 3-27 Sample I/M Readiness Selection Screen**

- 4) Use the **UP/DOWN** scroll button, as necessary, to view the status of the MIL light (**ON** or **OFF**) and the following monitors.

For spark ignition engines:

- **MIS** – Misfire Monitor
- **FUEL** – Fuel System Monitor
- **CCM** – Comprehensive Component Monitor
- **EGR** – EGR System Monitor
- **O2S** – O2 Sensors Monitor
- **CAT** – Catalyst Monitor
- **EVAP** – Evaporative System Monitor
- **HTR** – O2 Sensor Heater Monitor
- **AIR** – Secondary Air Monitor
- **HCAT** – Heated Catalyst Monitor

For compression ignition engines:

- **MIS** – Misfire Monitor
- **FUEL** – Fuel System Monitor
- **CCM** – Comprehensive Component Monitor
- **EGR** – EGR System Monitor

- **HCCAT** – NMHC Catalyst Monitor
- **NCAT** – NOx Aftertreatment Monitor
- **BP** – Boost Pressure System Monitor
- **EGS** – Exhaust Gas Sensor Monitor
- **PM** – PM Filter Monitor

Since DTCs Cleared	1/11
<b>MIL</b>	<b>OFF</b>
MIS	OK
FUEL	OK
CCM	OK
CAT	INC
HCAT	N/A
EVAP	INC

**Figure 3-28 Sample since DTC Cleared Screen**

- 5) If the vehicle supports readiness test of “**This Drive Cycle**”, a screen of the following displays.

This Drive Cycle	1/11
<b>MIL</b>	<b>OFF</b>
MIS	OK
FUEL	OK
CCM	OK
CAT	INC
HCAT	N/A
EVAP	INC

**Figure 3-29 Sample This Drive Cycle Screen**

- 6) Use the **UP/DOWN** scroll button for more PIDs if additional information is available on more than one page. Or use the **LEFT/RIGHT** scroll button to view PIDs in the previous/next page.
- 7) Press the **ESC** button to return to Diagnostic Menu.

## O2 Monitor Test

---

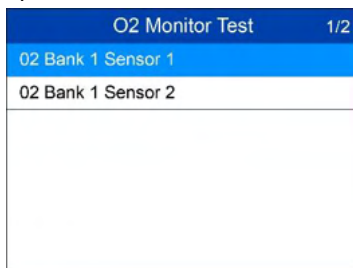
OBD II regulations set by SAE require that relevant vehicles monitor and tests on the oxygen (O<sub>2</sub>) sensors to identify problems related to fuel efficiency and vehicle emissions. These tests are not on-demand tests and they are done automatically when engine operating conditions are within

specified limits. These test results are saved in the on-board computer's memory.

The O2 Monitor Test function allows retrieval and viewing of O2 sensor monitor test results for the most recently performed tests from the vehicle's on-board computer.

The O2 Monitor Test function is not supported by vehicles which communicate using a controller area network (CAN). For O2 Monitor Test results of CAN-equipped vehicles, see *On-Board Monitor Test* on page 26.

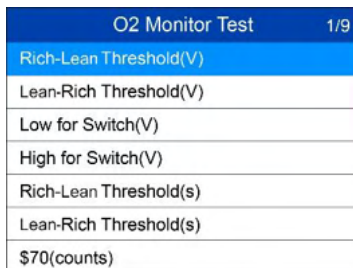
- 1) Use the **UP/DOWN** scroll button to select **O2 Monitor Test** from **Diagnostic Menu** and press **OK** button.
- 2) Wait a few seconds while the scan tool validates the PID MAP.
- 3) Use the **UP/DOWN** scroll button to select O2 sensor from **O2 Monitor Test** menu and press **OK** button.



O2 Monitor Test	1/2
O2 Bank 1 Sensor 1	
O2 Bank 1 Sensor 2	

**Figure 3-30 Sample O2 Monitor Test Screen 1**

- If the vehicle does not support the mode, an advisory message will be displayed on the screen.
- 4) View test results of selected O2 sensor.



O2 Monitor Test	1/9
Rich-Lean Threshold(V)	
Lean-Rich Threshold(V)	
Low for Switch(V)	
High for Switch(V)	
Rich-Lean Threshold(s)	
Lean-Rich Threshold(s)	
\$70(counts)	

**Figure 3-31 Sample O2 Monitor Test Screen 2**

- 5) Use the **UP/DOWN** scroll button to view more screens of data if additional information is available in more than one page.

- 6) Press the **ESC** button to return to the previous menu.

## On-Board Monitor Test

---

The On-Board Monitor Test is useful after servicing or after erasing a vehicle's control module memory. The On-Board Monitor Test for non-CAN-equipped vehicles retrieves and displays test results for emission-related power train components and systems that are not continuously monitored. The On-Board Monitor Test for CAN-equipped vehicles retrieves and displays test results for emission-related power train components and systems that are and are not continuously monitored.

The scan tool allows access to the results of on-board diagnostic monitoring tests for specific components/systems. The vehicle manufacturer is responsible for assigning "Manufacturer Defined Test IDs" and Component IDs for tests of different systems and components. The advanced feature of this scan tool enables you to read the definition of an On-Board Diagnostic Monitor ID.

---

### **NOTE**

The scan tool will display a Test definition only if this test definition is present in the vehicle's computer memory. If no such definition is present, the scan tool will just display the Test IDs.

---

In this test, there are typically a minimum value, a maximum value, and a current value for each monitor. By comparing the current value with the minimum and maximum value, the scan tool will determine if it is OK.

- 1) Use the **UP/DOWN** scroll button to select **On-Board Mon. Test** from **Diagnostic Menu** and press the **OK** button.
- 2) Wait a few seconds while the scan tool validates the PID MAP.
- 3) The scan tool will prompt you to select the vehicle make.
- 4) After you select the vehicle manufacturer, the scan tool shows the On-Board Monitors test results for specific monitored systems.



On-Board Mon. Test	1/4
Enhanced Evaporative Emissio...	
O2 Sensor Heater System Time...	
Exhaust Gas Recirculation Sys...	
Catalyst Efficiency Monitor	

**Figure 3-32 Sample On-board Mon. Test Screen 1**

- 5) From **On-Board Mon. Test** menu, use the **UP/DOWN** scroll button to select a test to view and press the **OK** button. Or, use the **LEFT/RIGHT** scroll button to view previous/next screen of test items.
  - If the vehicle under test does not support the mode, an advisory message will be displayed on the screen.
  - For CAN-equipped vehicles, test selections can be as below:

Enhanced Eaporative Emission	1/12
EVAP canister loading test	
EVAP excess vacuum test 1	
EVAP excess vacuum fail test 2	
EVAP excess vacuum pass tes...	
EVAP weak vacuum pass test 1	
EVAP weak vacuum fail test 1	
EVAP weak vacuum test 2 vac...	

**Figure 3-33 Sample On-board Mon. Test Screen 2**

- 6) Use the **UP/DOWN** scroll button to select the desired monitor from On-Board Mon. Test menu and press the **OK** button.
- 7) View test data on screen.

EVAP canister loading test	1/6
ID	04
Module	\$10
Test Value	0000
Min Limit	0000
Max Limit	----
Status	OK

**Figure 3-34 Sample On-board Mon. Test Screen 3**

---

**NOTE**

If the On-Board Monitor Test failed, this monitor item will be red color. Just by the text color you may easily find out which system is at fault.

---

EVAP canister loading test	1/6
ID	04
Module	\$10
Test Value	0000
Min Limit	0000
Max Limit	----
Status	Fail

**Figure 3-35 Sample On-board Mon. Test Screen 4**

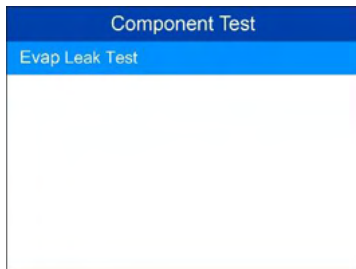
- 8) Press **ESC** button to return to the previous menus.

## Component Test

---

The Component Test function allows initiating a leak test for the vehicle's EVAP system. The scan tool itself does not perform the leak test, but commands the vehicle's on-board computer to start the test. Different vehicle manufacturers might have different criteria and methods for stopping the test once it has been started. Before starting the Component Test, refer to the vehicle service manual for instructions to stop the test.

- 1) Use the **UP/DOWN** scroll button to select **Component Test** from **Diagnostic Menu** and press the **OK** button.
- 2) Wait for the scan tool to display the **Component Test** menu.



**Figure 3-36 Sample Component Test Screen 1**

- 3) If the test has been initiated by the vehicle, a confirmation message will be displayed on the screen.



**Figure 3-37 Sample Component Test Screen 2**

- Some vehicles do not allow scan tools to control vehicle systems or components. If the vehicle under test does not support the EVAP Leak Test, an advisory message is displayed on the screen.



**Figure 3-38 Sample Component Test Screen 3**

- 4) Wait a few seconds or press any key to return to previous screen.

## View Vehicle Information

---

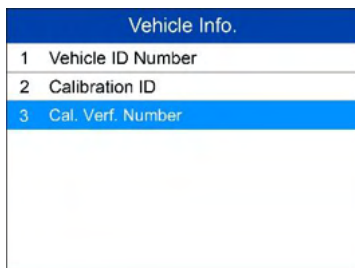
The Vehicle Info. function enables retrieval of Vehicle Identification No. (VIN), Calibration ID Nos. (CINs), Calibration Verification Nos. (CVNs) and In-use Performance Tracking on 2000 and newer vehicles that support Mode 9.

- 1) Use **UP/DOWN** scroll button to select **Vehicle Info.** from the **Diagnostic Menu** and press **OK** button.
- 2) An advisory message comes up to remind you. Wait a few seconds or press any key to continue.



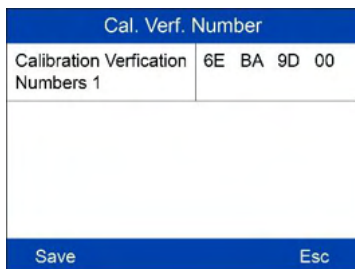
**Figure 3-39 Sample Vehicle Info. Screen 1**

- 3) Wait a few seconds while the scan tool reads vehicle information.
  - If the vehicle does not support this mode, a message shows on the display warning that the mode is not supported.
- 4) From **Vehicle Info.** Menu, use the **UP/DOWN** scroll button to select an available item to view and press the **OK** button.



**Figure 3-40 Sample Vehicle Info. Screen 2**

- 1) View retrieved vehicle information on screen.



**Figure 3-41 Sample Vehicle Info. Screen 3**

- 2) Press the **ESC** button to return to previous menu.

## Modules Present

---

The Modules Present function allows viewing of the module IDs and communication protocols for OBD2 modules in the vehicle.

- 1) Use the **UP/DOWN** scroll button to select **Modules Present** from **Diagnostic Menu** and press **OK** button.
- 2) View modules present with their IDs and communication protocols.

Modules Present	
ID	Protocol
\$10	ISO 9141-2

**Figure 3-42 Sample Modules Present Screen**

- 3) Press the **ESC** button to return to previous menu.

## Code Breaker

---

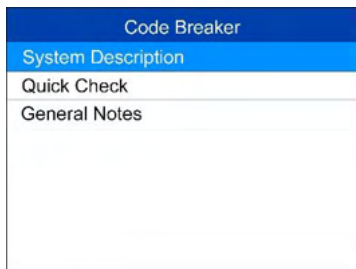
Code breaker function is used to provide descriptions of DTCs and helpful tips to deal with DTCs. It is useful for technicians to find the root cause of trouble code faster, saving diagnosis and repair time.

- 1) Repeat steps in the **Read Codes** section to identify DTCs.

1/1	
<b>P0021</b>	\$07E8 Generic
-----	
A Camshaft Position Timing	
Over - Advanced or System	
Performance Bank 2	

**Figure 3-43 Sample Code Breaker Screen 1**

- 2) Press the **“?”** button to display **Code Breaker** menu.



**Figure 3-44 Sample Code Breaker Screen**

- 3) Click on **System Description** and **Quick Check** to read the code information, symptoms, specifications, data/sensor information, etc.
- 4) Click on **General Notes** to view helpful repair information of DTCs.
- 5) To return to previous screen, press **ESC** button.

# 4 ABS

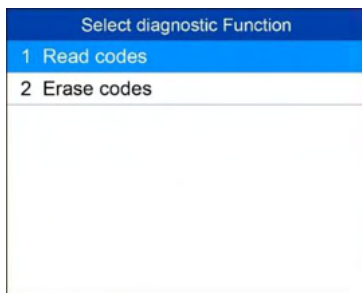
An anti-lock braking system (ABS) is an automobile safety system that allows the wheels on a motor vehicle to maintain tractive contact with the road surface according to driver inputs while braking, preventing the wheels from locking up (ceasing rotation) and avoiding uncontrolled skidding. It is an automated system that uses the principles of threshold braking and cadence braking which were practiced by skillful drivers with previous generation braking systems. It does this at a much faster rate and with better control than many drivers could manage.

An ABS warning lamp that is on usually means trouble and you need to pull the code to figure out what is wrong. The AL609P provides convenient service to read and erase codes for the ABS.

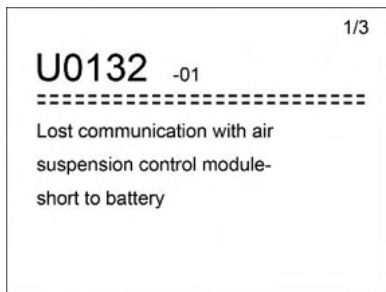
## Read Codes

---

1. From **Main Screen** (*Figure 2-2*), use the **UP/DOWN** scroll button and **LEFT/RIGHT** scroll button to select **ABS** and press the **OK** button.
2. Select **Read codes** from the diagnostic function list.



**Figure 4-1 Sample Diagnostic Function Screen**



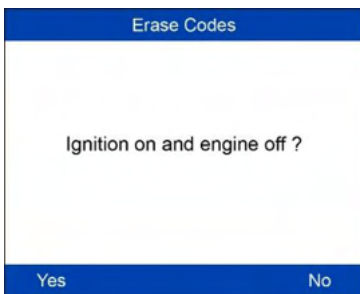
**Figure 4-2 Sample Trouble Codes Screen**

3. All the DTCs of the ABS control module are displayed. The data will be automatically saved for later review.

## Erase Codes

---

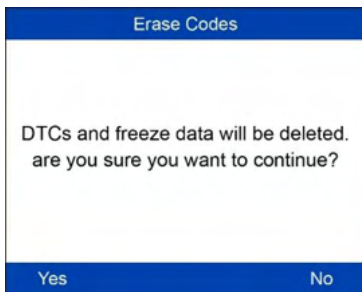
1. Select Erase codes from the diagnostic function list (*Figure 4-1*).
2. Follow the on-screen instruction and make sure the ignition on and engine off. Press **Yes** to continue.



**Figure 4-3 Sample Erase Codes Screen**

3. A confirmation message "DTCs and freeze data will be deleted. Are you sure you want to continue?" will pop up to ask for your confirmation. Press **Yes** to continue.
4. Erase Codes command will be sent and you can perform Read Codes function to verify. Press any key to continue.





**Figure 4-4 Sample Erase Codes Screen**

---

**NOTE**

For some test vehicles, the Erase Codes function is automatically performed after Read Codes function, follow the on-screen instructions to complete the service.

---

# 5 SRS

The purpose of the SRS light on your instrument panel is to alert you of a potential problem with your supplemental restraint system.

Use the AL609P to have the system checked if:

- The light does not come on when you turn the ignition ON.
- The light stays on after the engine starts.
- The light comes on or flashes while you are driving.

## Read Codes

---

1. From **Main Screen** (*Figure 2-2*), use the **UP/DOWN** scroll button and **LEFT/RIGHT** scroll button to select **SRS** and press the **OK** button.
2. Select **Read codes** from the diagnostic function list (*Figure 4-1*).
3. All the DTCs of the ABS control module are displayed. The data will be automatically saved for later review.



**Figure 5-1 Sample Trouble Codes Screen**

## Erase Codes

---

1. Select **Erase codes** from the diagnostic function list (*Figure 4-1*).
2. Follow the on-screen instruction and make sure the ignition on and engine off. Press **Yes** to continue.
3. A confirmation message "DTCs and freeze data will be deleted. Are you sure you want to continue?" will pop up to ask for your confirmation.

Press **Yes** to continue.

4. Erase Codes command will be sent and you can perform Read Codes function to verify. Press any key to continue.

# 6 DTC Lookup

The DTC Lookup function allows user to search definitions of DTC stored in built-in DTC library.

- 1) From **Main Screen** (Figure 2-2), use the **UP/DOWN** scroll button and **LEFT/RIGHT** scroll button to select **DTC Lookup** and press the **OK** button.
- 2) From **DTC Lookup** screen, use the **LEFT/RIGHT** button to move to the desired character, use the **UP/DOWN** button to change selected digit/character and press the **OK** button to confirm.



**Figure 6-1 Sample DTC Lookup Screen**

- 3) View the DTC definition on screen. When DTC definition covers more than one screen, use the **LEFT/RIGHT** button or **UP/DOWN** button to view additional information on previous/next screens.
  - If retrieved DTCs contain any manufacturer specific codes, the AutoVIN function embedded in this tool will automatically display the definition of the code.
  - If definition could not be found, the scan tool displays "**Please refer to vehicle service manual!**"
  - For code breaker information, you need to press the "?" **Help** button.

In the **Code Breaker** screen, there are three options to assist user to understand DTC more: **System Description** and **Quick Check** to read detailed description of DTCs, **General Notes** to view helpful repair information of DTCs.

- 4) To view previous or next DTC in the built-in DTC library, use the **LEFT/RIGHT** button.
- 5) To enter another DTC, press the **ESC** button to return to previous screen.
- 6) To exit to **Main Screen**, press the **ESC** button.

# 7 Playback Data

The Playback function allows viewing and printing of data from last test recorded by the scan tool.

## Review Data

---

- 1) Use the **LEFT/RIGHT** scroll button to select **Playback** from **Main Screen** (*Figure 2-2*), and press the **OK** button. Wait for the **Review Data** screen to appear.



**Figure 7-1 Sample Review Data Screen 1**

- 2) To review data saved in the OBDII/EOBD function, select **OBDII/EOBD** in the **Replay** menu. To review data saved in the **ABS/SRS** function, select **ABS/SRS** in the **Replay** menu. Then press **OK** button to continue.
- 3) Use the **UP/DOWN** scroll button to select the desired DTC entries from **OBD II/EOBD** or **ABS** or **SRS** menu, and press the **OK** button to view details of the trouble codes saved during the vehicle examine.

---

**NOTE**

There are four major types of trouble codes, they are Trouble Code, Data Stream, Freeze Frame, and ECU Information. The tool will only display the trouble codes save.

---

OBD II /EOBD		1/4
1	Trouble Code	
2	Data Stream	
3	Freeze Frame	
4	ECU Information	
Delete		Delete All

**Figure 7-2 Sample Review Data Screen 2**

- If no data from previously tested vehicle is recorded, a message **"No data available!"** shows on the screen.
- Review selected data on screen.

1 of 1 frame		1
DTC_CNT		2
FUEL_TYP		--
ALCH_PCT(%)		100.0
EVAP_VPA(kPa)		327.675
EVAP_VP(Pa)		-1
STSO2FT1(%)		99.2
Pre. Frame		Print
		Next Frame

**Figure 7-3 Sample Reviewing Data Screen 3**

## Delete Data

---

By selecting **Delete** on the review screen (*Figure 7-1*), you are allowed to erase the selected data on the scan tool. Review the recordings thoroughly before erasing. You could also erase all recordings by select **Delete All**.

### NOTE

Don't use **Delete All** unless you are definitely sure what you are going to proceed.

---

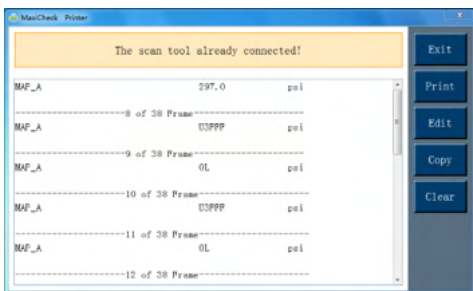
## Print Data

---

By selecting **Print** option on the trouble codes screen, you are allowed to send the recorded files to your computer and then to the printer.

The Print Data function allows printing out DTC data recorded by the scan tool by connecting the scan tool to a PC or laptop with the USB cable supplied.

- 1) Download the **Maxi PC Suite** from [www.autel.com](http://www.autel.com) and install.
- 2) Connect the scanner to computer with the USB cable supplied.
- 3) Run **Autel Printer** software on computer.
- 4) Select **Playback** function in Main Screen of the scan tool. In **Scan/OBDII** screen, use the **UP/DOWN** scroll button to select the data you want to print. Wait for the reviewing window to display, and then select **Print** function. The selected file will be uploaded to your computer. For more detailed instructions, please refer to **4. Playback Data**.
- 5) The **Printer** will show as below.



**Figure 7-4 Sample Printer Screen**

- 6) The selected data will display on the textbox of **Printer**. By selecting the function keys on the right, you could execute the following operations:
  - Print – Print all data in the textbox to a printer connected to your computer.
  - Edit – Once clicked, the software will automatically open a NOTEPAD window with all recorded data displayed.
  - Copy – Copy all data in the textbox to the clipboard.
  - Clear – Delete all data in the textbox.
  - Exit – Quit the operation.
- 7) You are also allowed to edit, copy, and delete the data in the **Printer** window.



---

 **NOTE**

The scan tool can only print text data even though the data is saved in graphic mode.

The print function is not available on Mac for the present.

---

# 8 System Setup

The System Setup functions allow you to adjust default settings and view information about the scan tool.

- 1) **Language:** Selects the desired language.
- 2) **Unit of Measure:** Sets the unit of measure to English or Metric.
- 3) **Key Beep Set:** Turns on/off beep.
- 4) **About:** Provides information of the scan tool.
- 5) **Tool Self-test:** Checks if the LCD display and keyboard are working normally.
- 6) **Update Mode:** Accesses the Update Mode.
- 7) **Vehicle Info Show Set:** Turns on/off the Vehicle Info display.

---

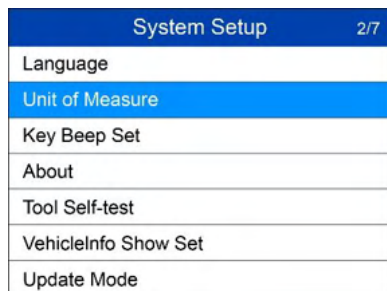
## NOTE

Settings of the unit will remain until change to the existing settings is made.

---

### To enter the Setup menu

From the **Main Screen:** Use the **UP/DOWN** scroll button and **LEFT/RIGHT** scroll button to select **Setup**, and press the **OK** button. Follow the instructions to make adjustments and settings as described in the above setup options.

A screenshot of a handheld device's 'System Setup' menu. The title 'System Setup' is at the top right, with '2/7' next to it. The menu items are listed vertically: Language, Unit of Measure (highlighted in blue), Key Beep Set, About, Tool Self-test, VehicleInfo Show Set, and Update Mode.

System Setup	2/7
Language	
Unit of Measure	
Key Beep Set	
About	
Tool Self-test	
VehicleInfo Show Set	
Update Mode	

Figure 8-1 Sample System Setup Screen

---

## Language

- *English is the default language.*

- 1) From **System Setup** screen, use the **UP/DOWN** scroll button to select **Language**, and press the **OK** button.
- 2) Use the **UP/DOWN** scroll button to select the desired language and press the **OK** button to save your selection and return to previous screen.

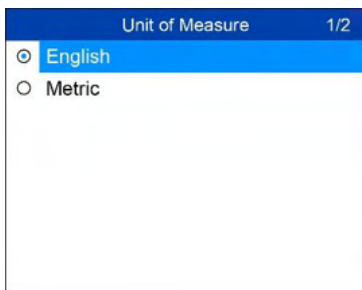


**Figure 8-2 Sample Language Screen**

## Unit of Measure

---

- *Metric is the default measurement unit.*
- 1) From **System Setup** screen, use the **UP/DOWN** scroll button to select **Unit of Measure** and press the **OK** button.
  - 2) From **Unit of Measure** screen, use the **UP/DOWN** scroll button to select the desired unit of measurement.



**Figure 8-3 Sample Unit of Measure Screen**

- 3) Press the **OK** button to save your selection and return to previous menu.

## Key Beep Set

---

This function allows you to turn on/off the build-in speaker for key pressing.

- *The default setting is Beep On.*
- 1) From **System Setup** screen, use the **UP/DOWN** scroll button to select **Key Beep Set** and press the **OK** button.
  - 2) From **Key Beep Set** menu, use the **UP/DOWN** scroll button to select **Beep ON** or **Beep OFF** to turn on/off the beep.



**Figure 8-4 Sample Key Beep Set Screen**

- 3) Press the **OK** button to save your selection and return to previous menu.

## About

---

The **About** function allows viewing of some important information such as serial number and software version number of the scanner.

- 1) From **Main Screen**, use the **UP/DOWN** scroll button and **LEFT/RIGHT** scroll button to select **About** and press the **OK** button; wait for the **About** screen to appear.
- 2) View tool information on screen.



**Figure 8-5 Sample About Screen**

## Tool Self-test

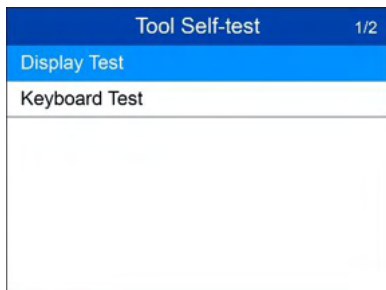
---

The Tool Self-test function checks if the display and keyboard are working properly.

### Display test

The **Display Test** function checks if the LCD display is working normally.

- 1) From **System Setup** screen, use the **UP/DOWN** scroll button to select **Tool Self-test**, and press the **OK** button.
- 2) Select **Display Test** from **Tool Self-test** menu and press the **OK** button to start test.



**Figure 8-6 Sample Tool Self-test Screen**

- 3) Look for missing spots in the red, green, blue, black and white LCD display.
- 4) When completed, press the **ESC** button to exit.

## Keyboard Test

The **Keyboard Test** function verifies if the keys are functioning properly.

- 1) Use the **UP/DOWN** scroll button to select **Keyboard Test** from the **Tool Self-test** menu (Figure 8-6), and then press the **OK** button.
- 2) Press any key to start test. When you press a key, the key name should be observed on the display. If the key name does not show up, then the key is not functioning properly.



**Figure 8-7 Sample Keyboard Test Screen**

- 3) Double press **ESC** to return to previous menu.

## Update Mode

---

This function allows you to update the scan tool software through a Mac or a Windows-based computer.

- *To update your scan tool, you need the following items.*

AutoLink® AL609P

A Mac-based or Windows-based computer or laptop with USB ports

A USB cable

## Register the Tool

You would update the scan tool **ONLY** after you had registered the tool on our website: [www.autel.com](http://www.autel.com). Then you could download software, update online, retrieve information and get warranty service.

---

### **NOTE**

Prior to registration, please confirm your network is working properly.

---

1. Visit the website <http://pro.autel.com>.

2. If you already have an Autel account, Sign In with your account ID and password.
3. If you are a new member to Autel, click on the **Create Autel ID** button on the left side to create an ID.
4. Enter the required information in the input fields, and click the **Get Verification Code** button to get a verification code for email validation.
5. The online system will automatically send a verification code to the registered email address. Input the code in the Verification code field and complete other required fields. Read through Autel's Terms and Conditions and click on Agree, and then click **Create Autel ID** at the bottom. A product registration screen will display.
6. The device's serial number and password is located in the [About](#) section of the Settings application on the tool.
7. Select your product model, enter the product serial number and password on the Product Registration screen, and click **Submit** to complete the registration procedure.

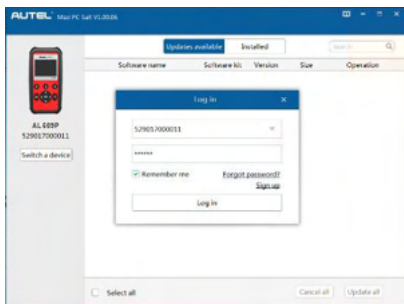
## Update Procedure

Autel frequently releases software updates that you can download. The Update feature makes it very easy to determine and get exactly what you need.

Connect the device with a Mac or a Windows-based computer using the included USB cable.

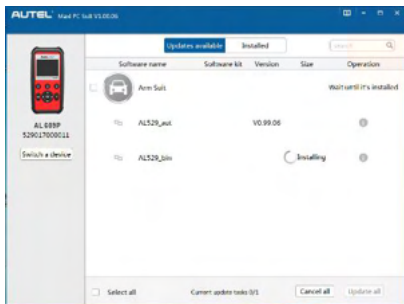
Follow the update procedure to finish updating. The Windows version is taken as an example here.

1. Download the **Maxi PC Suite** from [www.autel.com](http://www.autel.com) > *Support* > *Downloads* > *Autel Update Tools*, and install to your Windows-based computer.
2. Run the **Maxi PC Suite**. Wait for the Log In window to pop up.



**Figure 8-8 Sample Log in Window**

3. Connect the scan tool to your computer through the USB cable provided.
4. From **System Setup** screen in scan tool, select **Update Mode**, and press the **OK** button.
5. Enter your Autel ID and password and wait for the Update window to display. If you forget your password, you may click the [**Forget Password?**] to link to our website and find your password back. Or you may click **Sign up** to create an Autel ID to continue.
6. Select the product type and serial number, click **OK** to continue.
7. In the **Update** window, select the items you want to install. Usually, all available updates should be installed.



**Figure 8-9 Sample Update Window**

Generally, there are two ways to update programs:

### **Batch Update**

1. Select the programs that you would update by clicking on the check boxes next to those items. Then click the **Update All** button on the right



bottom of screen Click the **Clear All** button will reselect the items you want to update.

2. Or, click on the **Select All** checkbox on the left bottom of screen and all updatable items will be selected automatically. Then click the **Update All** button on the right side of screen.
3. When the downloading is completed, the downloaded programs will be installed automatically. The new version will replace the old version.

### Single Update

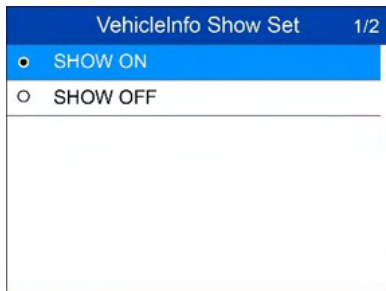
1. Find out the desired updating item and click the **Update** button in the same line.
2. When the downloading is completed, the downloaded program will be installed automatically. The new version will replace the old version.

## Vehicle Info Show Set

---

This function allows you to turn on/off the Vehicle Info display when entering the test vehicle through OBDII function.

- *The default setting is Show On.*
- 4) From **System Setup** screen, use the **UP/DOWN** scroll button to select **Vehicle Info Show Set** and press the **OK** button.
  - 5) From **Vehicle Info Show Set** menu, use the **UP/DOWN** scroll button to select **Show ON** or **Beep OFF** to turn on/off the Vehicle Info screen.



**Figure 8-10 Sample Key Beep Set Screen**

- 6) Press the **OK** button to save your selection and return to previous menu.

# 9 Compliance Information

## FCC Compliance

This device complies with Part 15 of the FCC rules and Industry Canada's license-exempt RSSs. Operation is subject to the following two conditions:

1. This device may not cause harmful interference.
2. This device must accept any interference received, including interference that may cause undesired operation.

Cet appareil est conforme aux CNR exempts de licence d'Industrie Canada. Son fonctionnement est soumis aux deux conditions suivantes:

1. Ce dispositif ne peut causer des interférences; et
2. Ce dispositif doit accepter toute interférence, y compris les interférences qui peuvent causer un mauvais fonctionnement de l'appareil.

---

### **WARNING**

Changes or modifications not expressly approved by the party responsible for compliance could void the user's authority to operate the equipment.

---

### **NOTE**

This equipment has been tested and found to comply with the limits for a Class B digital device, pursuant to Part 15 of the FCC Rules. These limits are designed to provide reasonable protection against harmful interference in a residential installation.

---

This equipment generates uses and can radiate radio frequency energy and, if not installed and used in accordance with the instructions, may cause harmful interference to radio communications. However, there is no guarantee that interference will not occur in a particular installation. If this equipment does cause harmful interference to radio or television reception, which can be determined by turning the equipment off and on, the user is encouraged to try to correct the interference by one or more of the following measures:

- Reorient or relocate the receiving antenna.

- Increase the separation between the equipment and receiver.
- Connect the equipment into an outlet on a circuit different from that to which the receiver is connected.
- Consult the dealer or an experienced radio/TV technician for help.

Changes or modifications not expressly approved by the party responsible for compliance could void the user's authority to operate the equipment.

## **SAR**

The radiated output power of this device is below the FCC radio frequency exposure limits. Nevertheless, the device should be used in such a manner that the potential for human contact is minimized during normal operation.

The exposure standard for wireless devices employs a unit of measurement known as the Specific Absorption Rate, or SAR. The SAR limit set by the FCC is 1.6 W/Kg. Tests for SAR are conducted using standard operating positions accepted by the FCC with the device transmitting at its highest certified power level in all tested frequency bands.

Although the SAR is determined at the highest certified power level, the actual SAR level of the device while operating can be well below the maximum value. This is because the device is designed to operate at multiple power levels so as to use only the power required to reach the network. To avoid the possibility of exceeding the FCC radio frequency exposure limits, human proximity to antenna should be minimized.

## **RF WARNING STATEMENT**

The device has been evaluated to meet general RF exposure requirement. The device can be used in portable exposure condition without restriction.

## **RoHS COMPLIANCE**

This device is declared to be in compliance with the European RoHS Directive 2011/65/EU.

## **CE COMPLIANCE**

This product is declared to conform to the essential requirements of the following Directives and carries the CE mark accordingly:

EMC Directive 2014/30/EU

R&TTE Directive 1999/5/EC

Low Voltage Directive 2014/35/EU

# 10 Warranty and Service

## Limited One Year Warranty

---

Autel warrants to its customers that this product will be free from all defects in materials and workmanship for a period of one (1) year from the date of the original purchase, subject to the following terms and conditions:

- 1) The sole responsibility of Autel under the Warranty is limited to either the repair or, at the option of Autel, replacement of the scan tool at no charge with Proof of Purchase. The sales receipt may be used for this purpose.
- 2) This warranty does not apply to damages caused by improper use, accident, flood, lightning, or if the product was altered or repaired by anyone other than the Manufacturer's Service Center.
- 3) Autel shall not be liable for any incidental or consequential damages arising from the use, misuse, or mounting of the scan tool. Some states do not allow limitations on how long an implied warranty lasts, so the above limitations may not apply to you.
- 4) All information in this manual is based on the latest information available at the time of publication and no warranty can be made for its accuracy or completeness. Autel reserves the right to make changes at any time without notice.

## Service Procedures

---

If you have any questions, please contact your local store, distributor or visit our website at [www.autel.com](http://www.autel.com).

If it becomes necessary to return the scan tool for repair, contact your local distributor for more information.